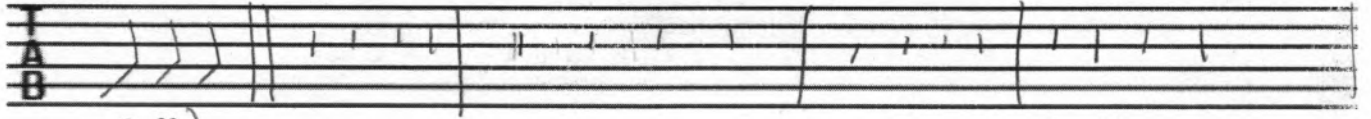


# Nuages (Key of F)

leadin

D<sup>b7</sup>(9)

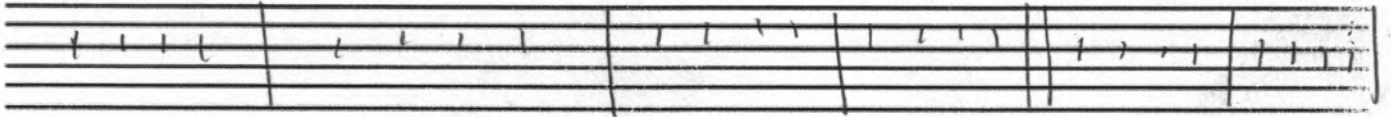
C<sup>7-9</sup> (or D<sup>bdim</sup>) Fmaj<sup>7</sup>



D<sup>b7</sup>(9)

C<sup>7-9</sup> (or D<sup>bdim</sup>) Fmaj<sup>7</sup>

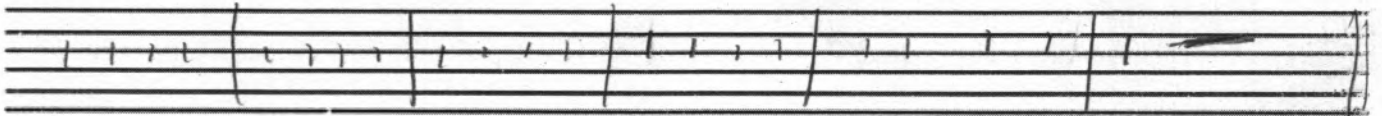
A<sup>7</sup>



Dm

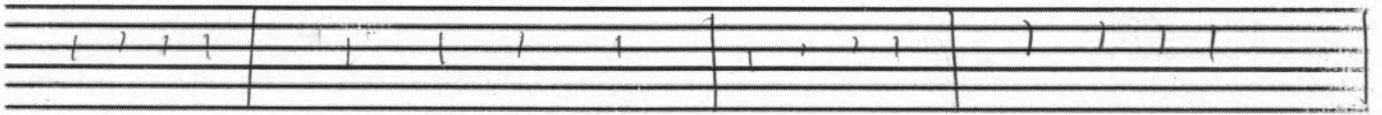
G<sup>7</sup>

C<sup>7</sup> (C<sup>11</sup>) C<sup>7</sup> C<sup>7</sup>



D<sup>b7</sup>(9)

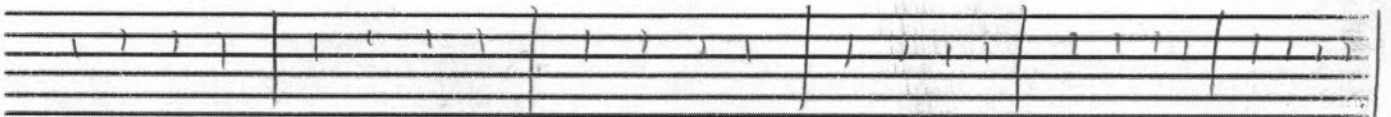
C<sup>7-9</sup> (or D<sup>bdim</sup>) Fmaj<sup>7</sup>



F<sup>7</sup>

B<sup>b</sup> (maj<sup>7</sup>)

B<sup>b</sup>m



Fmaj<sup>7</sup>

D<sup>b7</sup>(9)

C<sup>7-9</sup> (or D<sup>bdim</sup>) Fmaj<sup>7</sup>

Back to leadin

